

rovatti pompe

a Family Company

www.rovatti.it

General Overview

Technical Data

- Size range from 32 to 250 mm
- Max. flow rate 1300 m³/h
- Max. head 110 mca
- Max. speed 3500 min⁻¹
- Max. motor rating 315 kW



Family identification

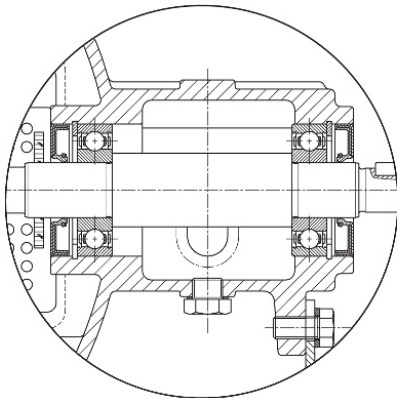
Product series

- Example SN3E80-250-GR-TM-SS
 - SN End Suction pump
 - 3 Bearing bracket size
 - E High efficiency series
 - 80 Nom. discharge nozzle diam.
 - GR Grease lubricated bearings
 - TM Mechanical seal
 - SS Stainless steel impeller

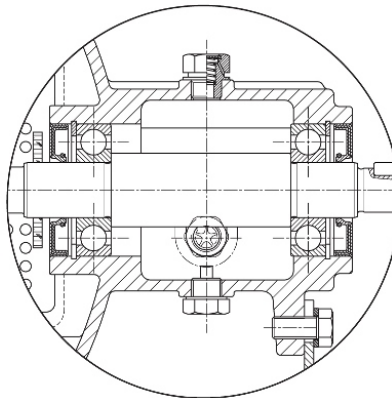


Family differentiation ***Bearings lubrication options***

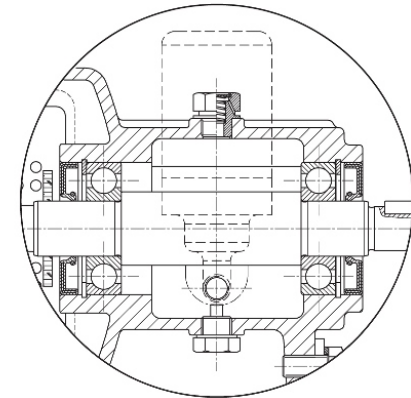
-GR
Grease



-OB
Oil



-LC
Oil, Constant level



Family differentiation

Bearings lubrication options

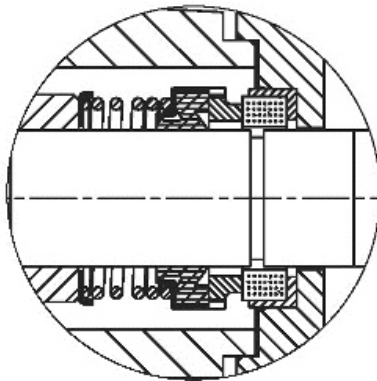
- Grease lubricated (-GR)
suggested for standard operating condition
- Oil lubricated (-OB)
suggested for 24/7 service condition
- Constant oil level lubricated (-LC)
suggested for preventive maintenance program



Family differentiation ***Shaft seal options***

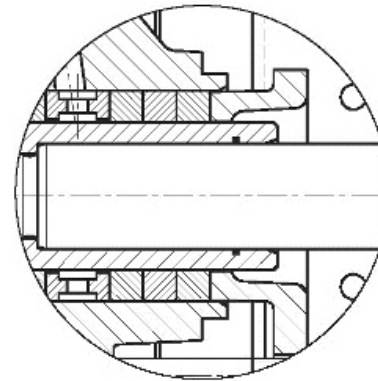
-TM

Mechanical seal version



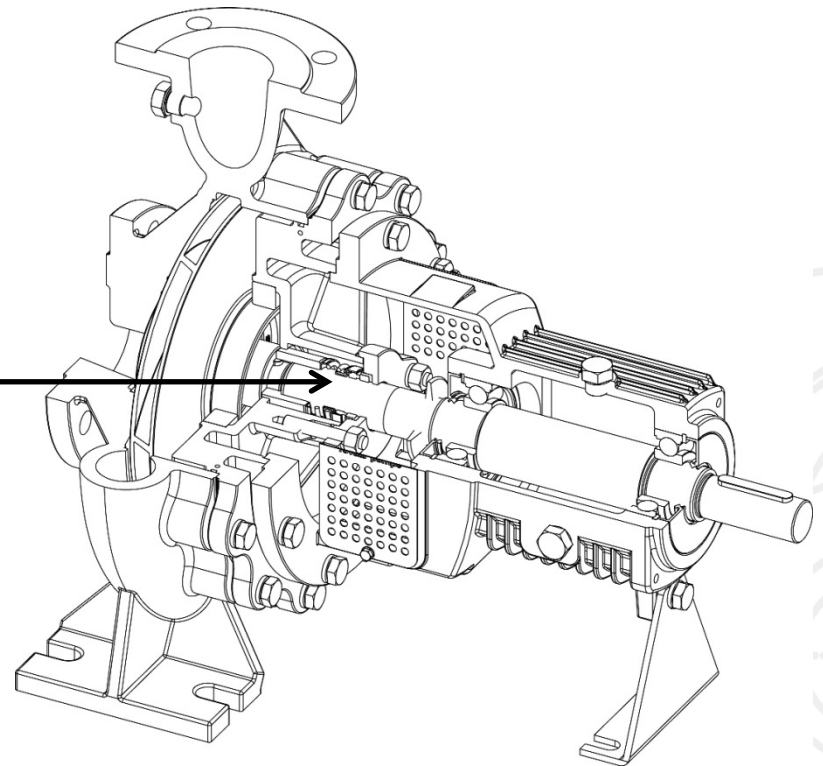
-TB

Packed gland version



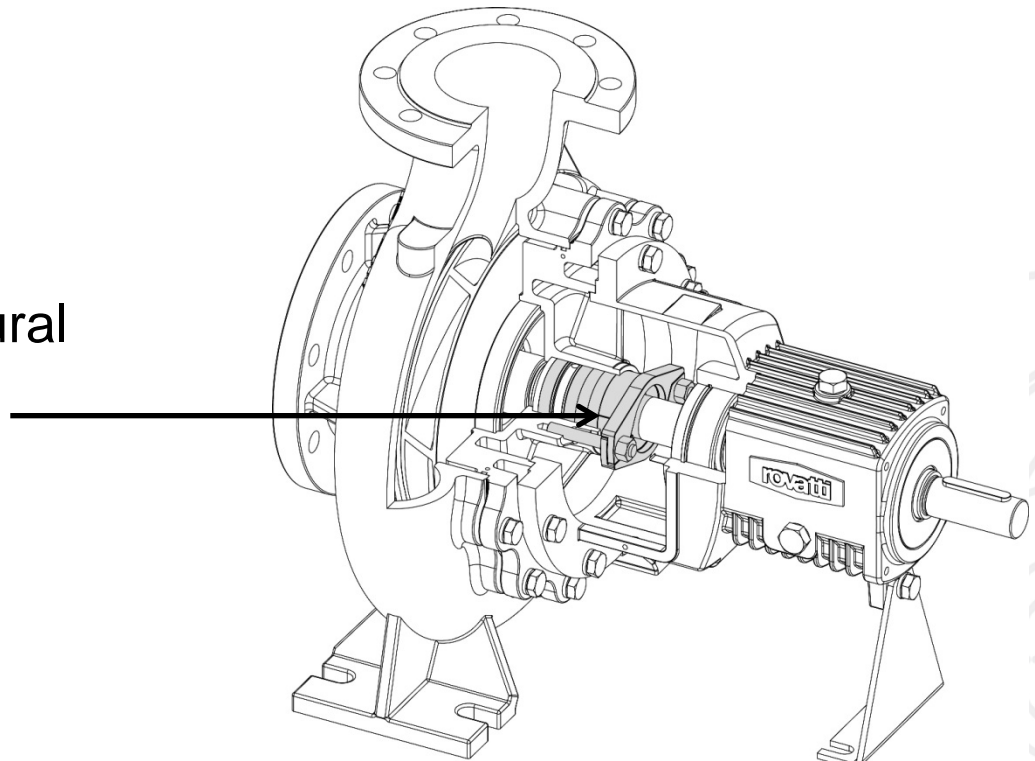
Family differentiation
Mechanical seal (-TM)

suggested for all
applications



Family differentiation
Gland packing seal (-TB)

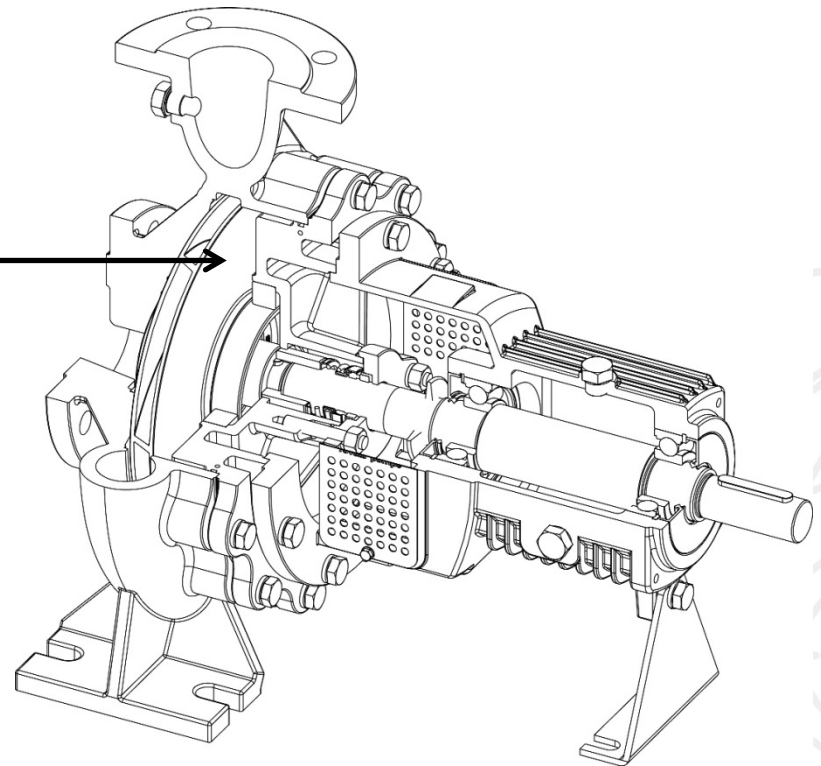
suggested for agricultural
market



Family differentiation

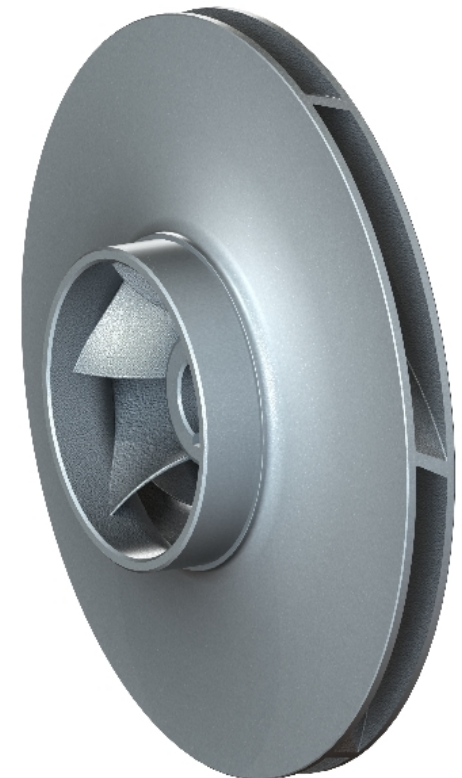
Impeller material options

- Stainless steel (-SS)
- Carbon steel (-GG)



Family differentiation ***Stainless steel Impeller (-SS)***

- Stainless steel AISI 304 impeller standard execution for sizes from 32 ÷ 80 and impeller nominal diameter 160, 200, 250;
as optional for all other pump models
- Better corrosion resistance compared to standard cast iron impeller construction
- No clog problems between impeller and wear rings after long rest



Family differentiation

Carbon steel Impeller option (-GG)

- Carbon steel C45 impeller standard execution for size 65-315, 65-400, 80-315, 80-400 and size 100 ÷ 250
- Cathaphoresis treatment for better corrosion resistance compared to standard cast iron impeller construction
- No clog problems between impeller and wear rings after long rest



SNE series

Three times more efficient

- Efficiency at the top of the market
Optimized and tested hydraulic design
- Maximum reliability
Microcasted impeller and oversized ball bearings
- Easy maintenance
Back pull-out design and replaceable wear rings

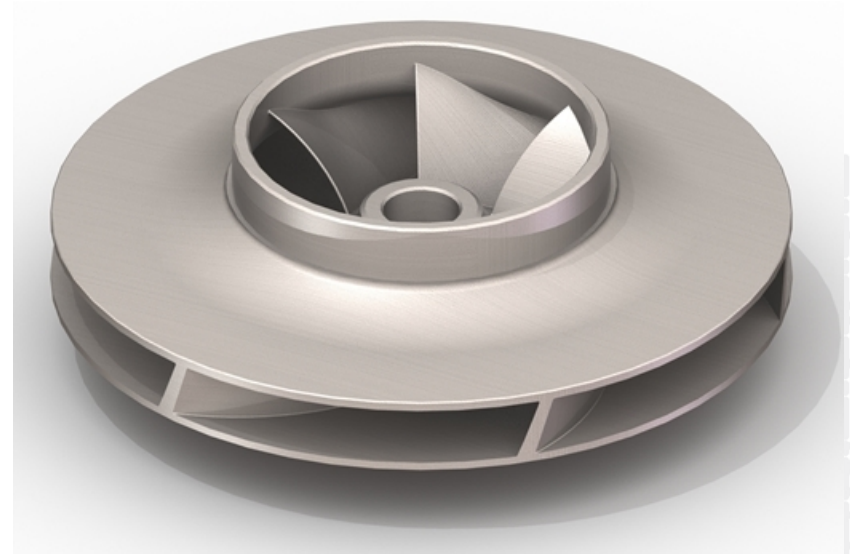
e³



Design features & benefits

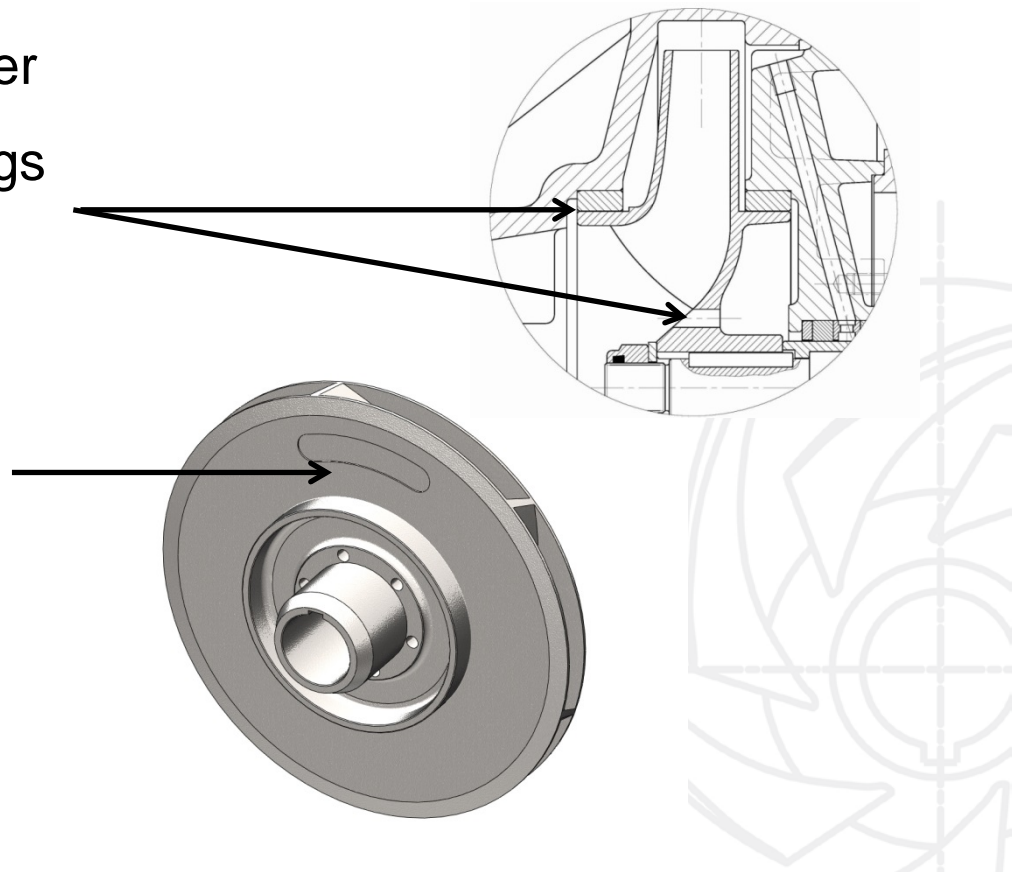
Microcasted impeller

- Hydraulic design blade shape is improved compared to sand casting technology constrains
- Cavitation and wear resistance is improved compared to sand casting raw materials



Design features & benefits ***Balanced impeller***

- Hydraulically balanced impeller with two replaceable wear rings improve ball bearings life
- Dinamically balanced (ISO 1940 G6,3) impeller increase ball bearing life too

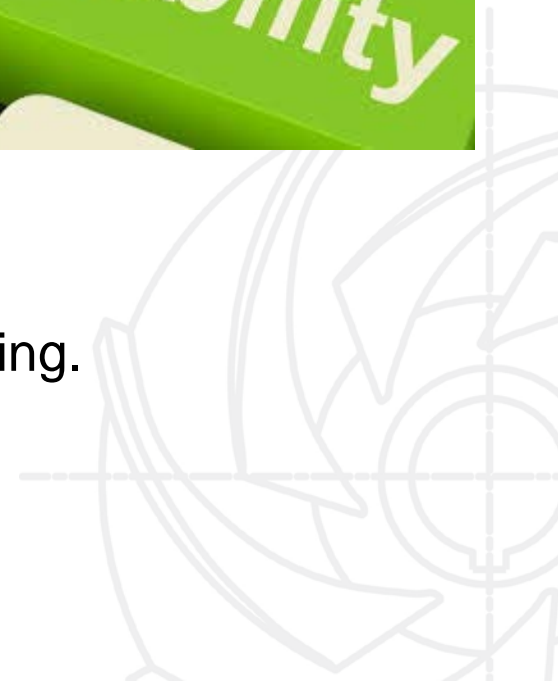


Design features & benefits

Low vibration and smooth running

- The combination of impeller features
 - microcasted technology
 - hydraulic balancing
 - dynamic balancing
 - good suction performance

results in low vibration levels and very smooth running.



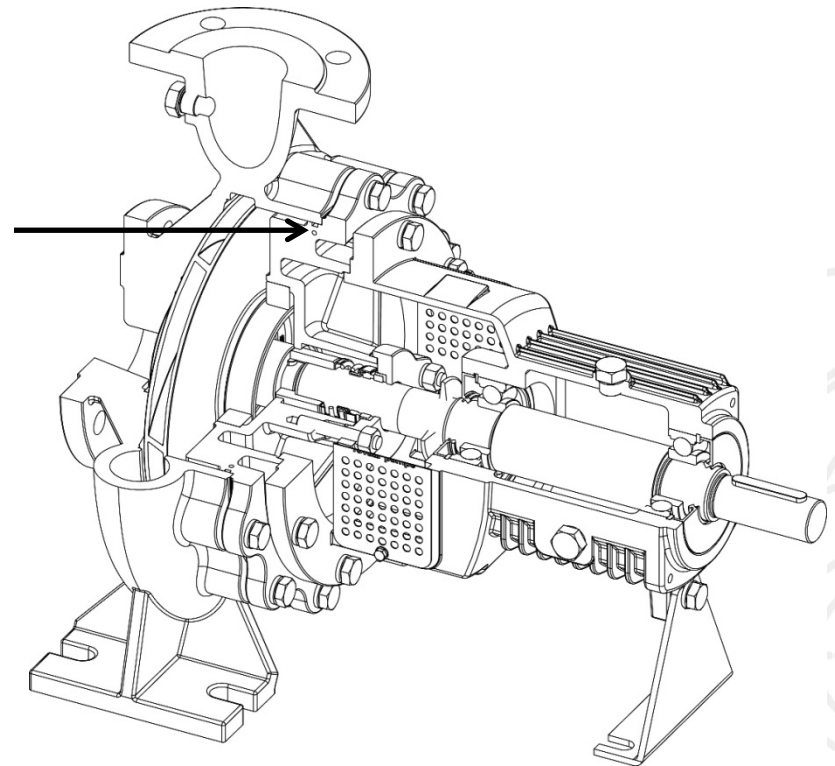
Design features & benefits

O-Ring seal

- O-Ring seal between pump body and intermediate support

No risk of leakage

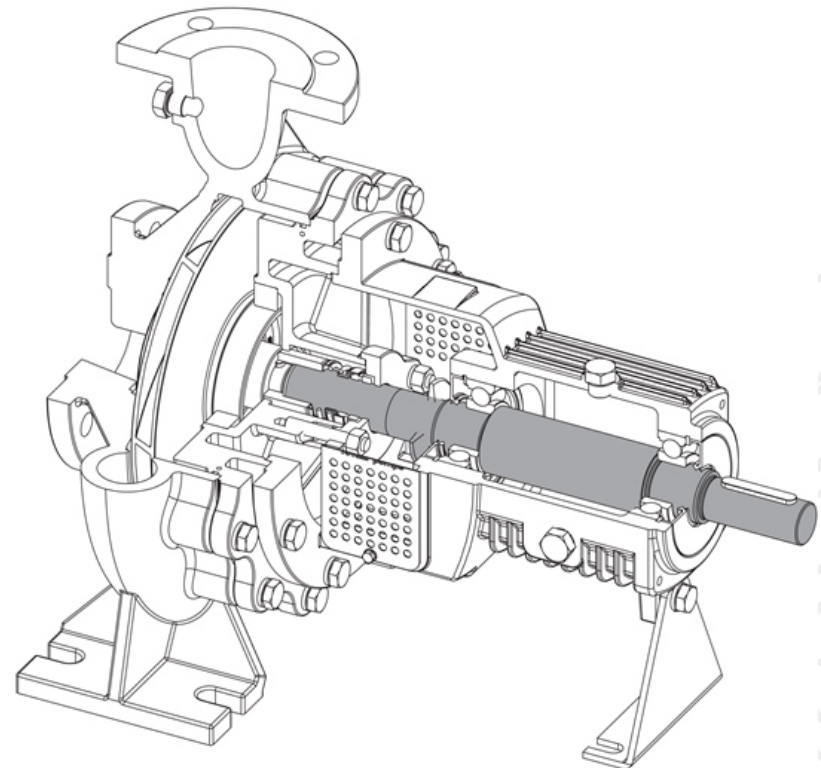
Easier to assemble and dismantle



Design features & benefits

Shaft

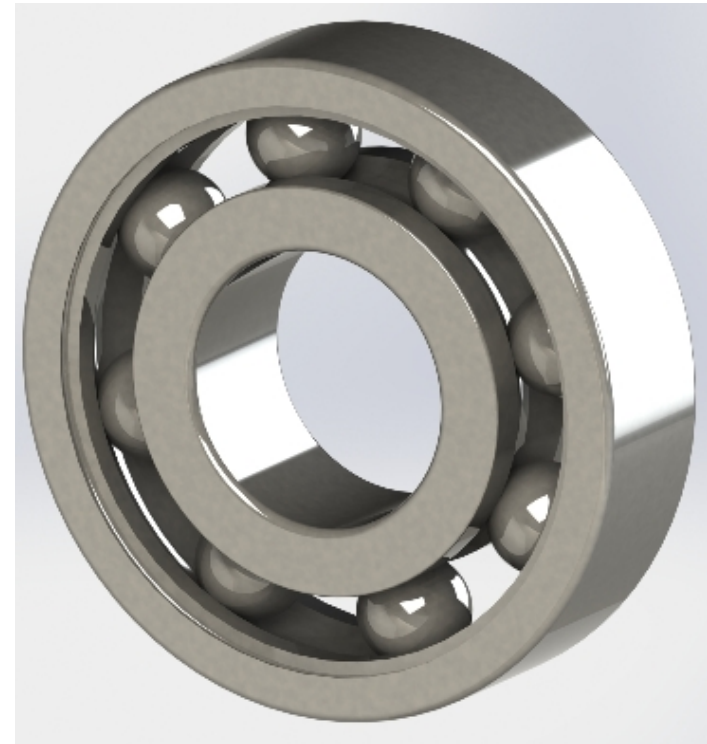
- AISI 420 stainless steel shaft
- High safety factor design for shaft and keyway even under fatigue loading



Design features & benefits

Ball bearings

- Oversized ball bearings increase capacity and life
- Over 50.000 hours of operation design (L10h)
- Original manufactured NSK and SKF ball bearings

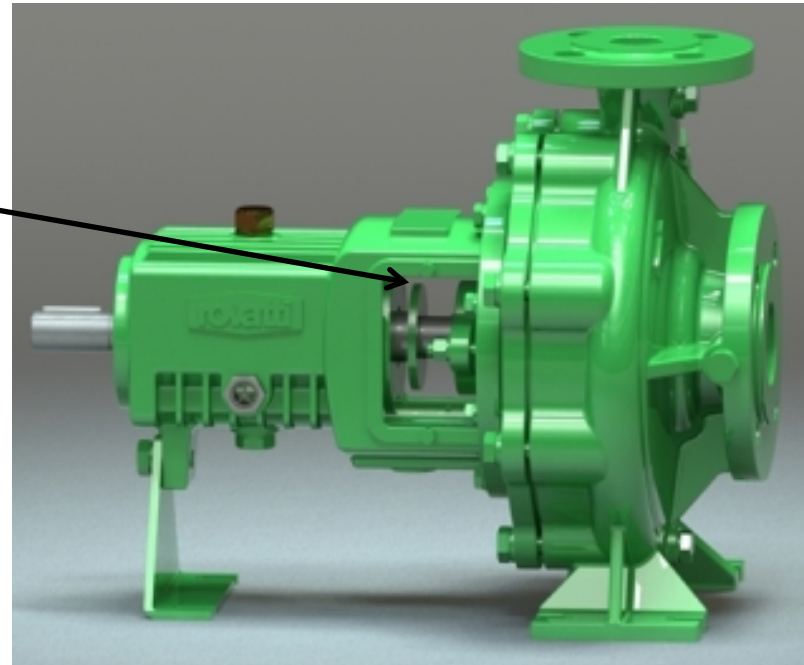


Design features & benefits

Seal ring

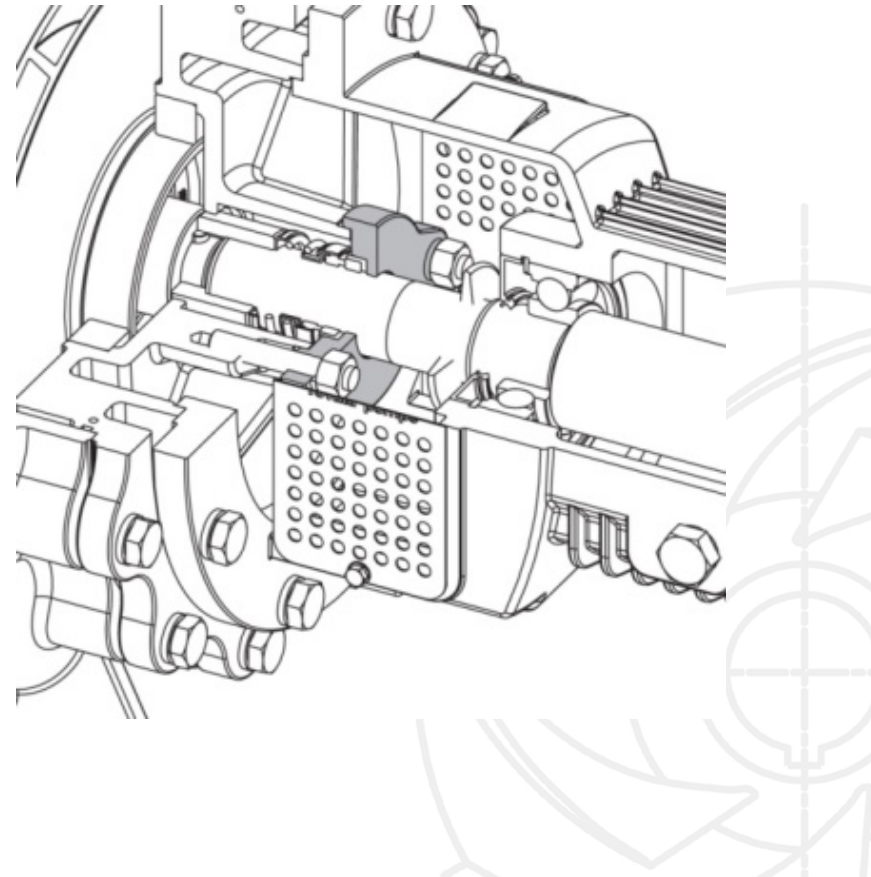
- Seal ring between shaft seal and bearing bracket

Protects ball bearings in case of shaft seal failure



Design features & benefits ***Mechanical seal (-TM option)***

- Standard mechanical seal (DIN 24960)
- Larger seal chamber for easy maintenance
- Seal chamber cover for mechanical seal inspection

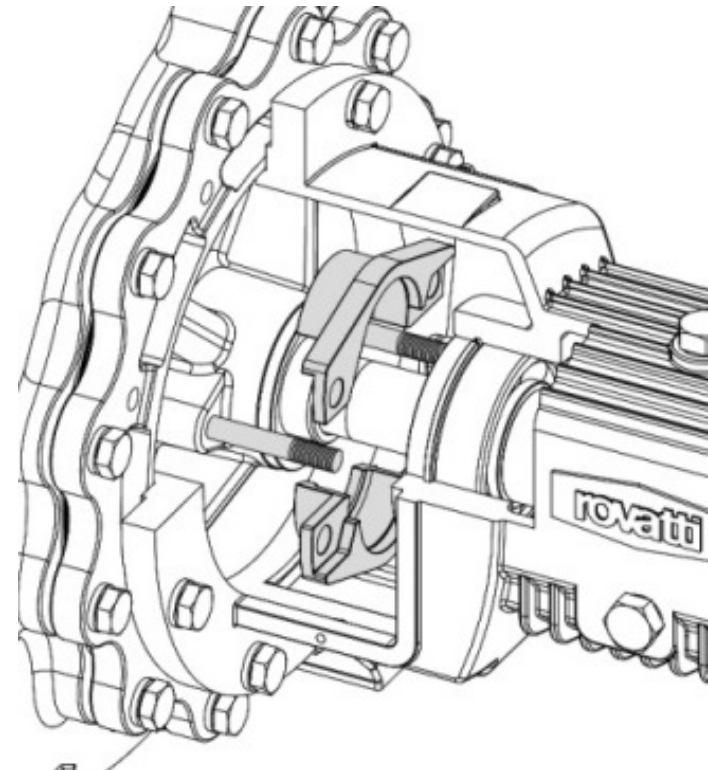


Design features & benefits ***Gland packing seal (-TB option)***

- Exclusive Twinner System®

Stuffing box flange can be separated into two halves for easier dismantle

No need to dismantle the pump to change gland packing when worn



Design features & benefits ***Gland packing seal (-TB option)***

- Exclusive Twinner System®

Stainless steel stuffing box
flange

Stainless steel chromium plated
shaft protecting sleeve



Design features & benefits ***Bearing bracket (-GR option)***

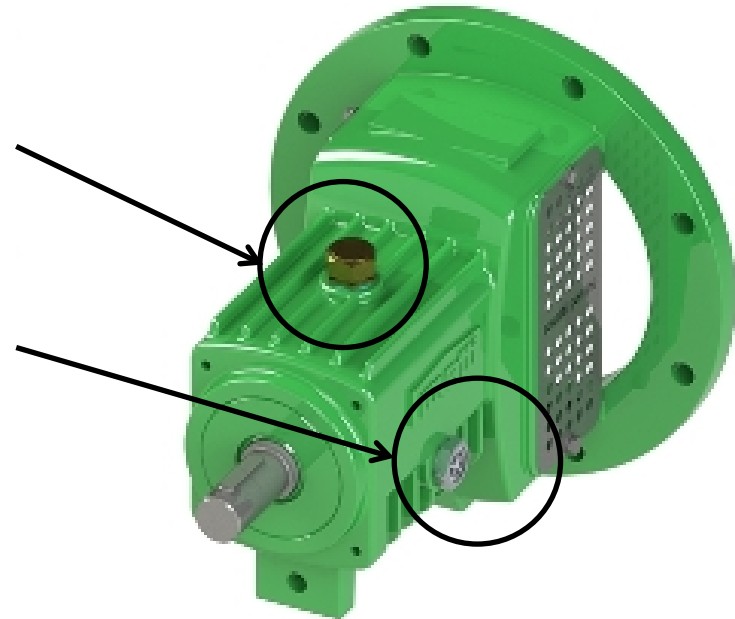
- Grease lubricated bearing bracket
- Permanently lubricated ball bearings
- No maintenance needed for standard operating condition



Design features & benefits

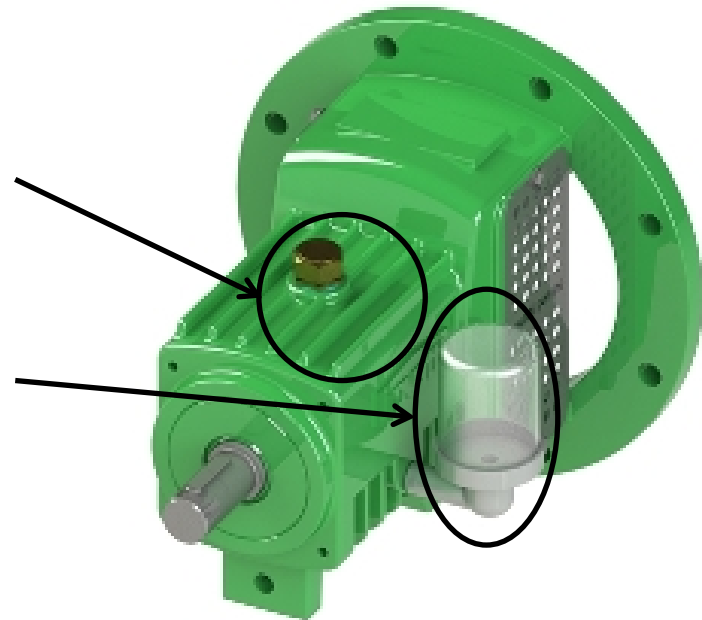
Bearing bracket (-OB option)

- Oil lubricated bearing bracket
- Brass oil filler plug with air-vent filter
- Oil level inspection glass



Design features & benefits ***Bearing bracket (-LC option)***

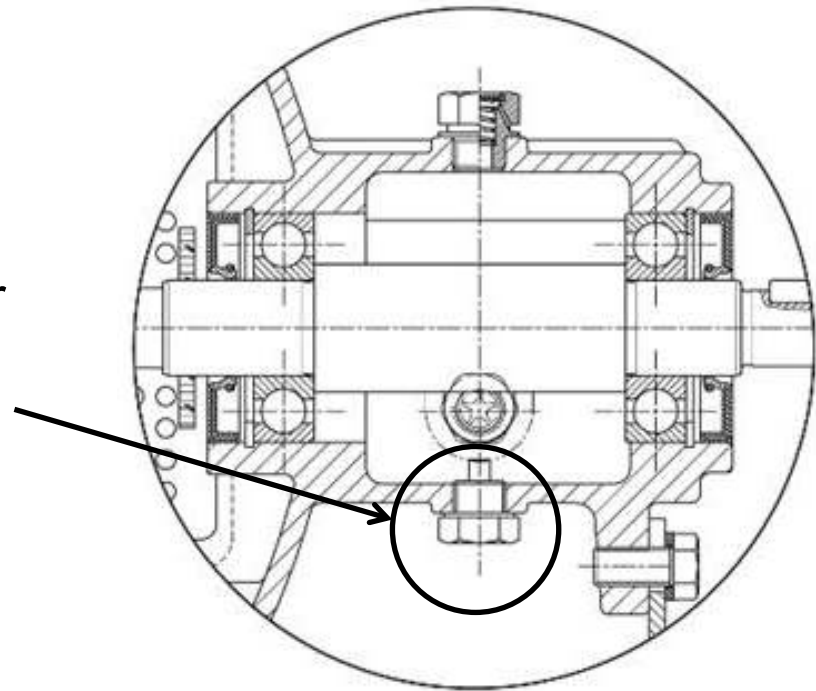
- Oil lubricated bearing bracket
- Brass oil filler plug with air-vent filter
- Constant level oiler



Design features & benefits

Bearing bracket (-OB, -LC options)

- Oil lubricated bearing bracket
- Magnetic drain plug saves ball bearings from the wear and tear of metal particles



Reference

Caltanissetta - Italy

- Municipal water supply
- 4 x SN3E80-200
- 2 poles
- Total Power 180 kW



Reference *Abu Dhabi - UAE*

- Pipeline flushing units
- 2 x SN4E100-400
- 4 poles
- Total Power 110 kW



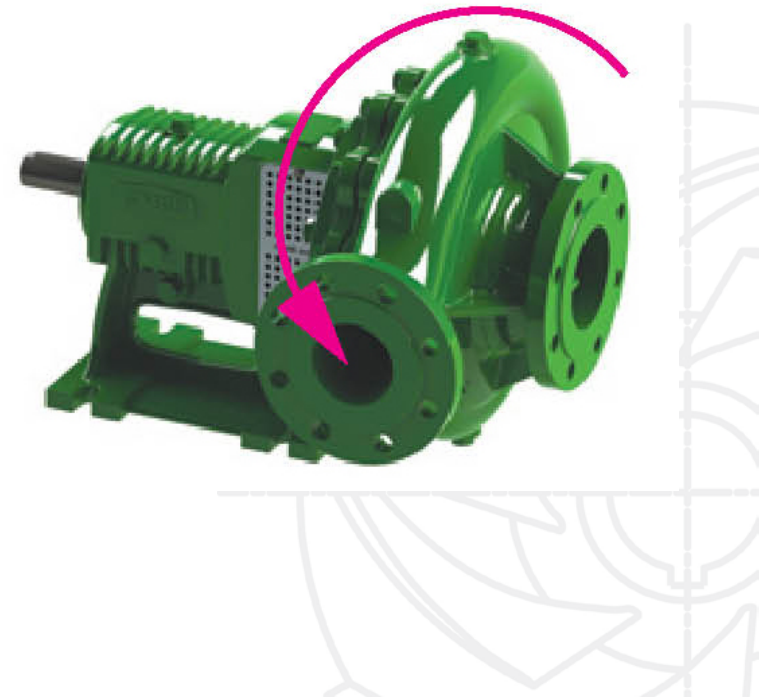
Reference *Jakarta - Indonesia*

- Chilled water pump units
- 3 x SN4E125-400
- 4 poles
- Total Power 300 kW



Related products ***SNF series***

- Horizontal single-stage centrifugal pumps with performance in compliance to EN733 standards and with upwards delivery flange laterally rotating 90° on both sides
- Max. flow rate 600 m³/h
- Max. head 150 mca
- Max. motor rating 162 kW



Related products

MNE series

- Close-coupled electric pumps according to EN 733 norm
- IEC standard electric motors
- Max. flow rate 390 m³/h
- Max. head 105 mca
- Max. motor rating 90 kW



Press Area *Advertising campaign*

- 2013 - 2014



Press Area *Advertising campaign*

- 2015

Artwork presented at



MILANO 2015
NUTRIRE IL PIANETA
ENERGIA PER LA VITA



*You don't need
to be a work of art
to let people talk
about you...*



rovatti pompe
a Family Company

Thank you for your attention

www.rovatti.it